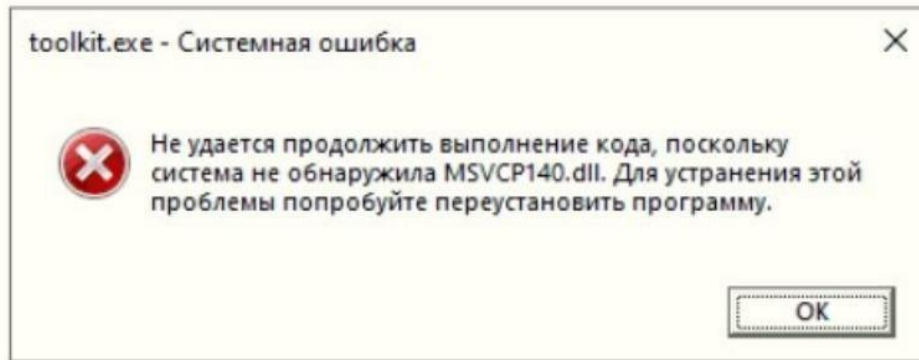


Note: if a library availability error occurs when opening the Toolkit:

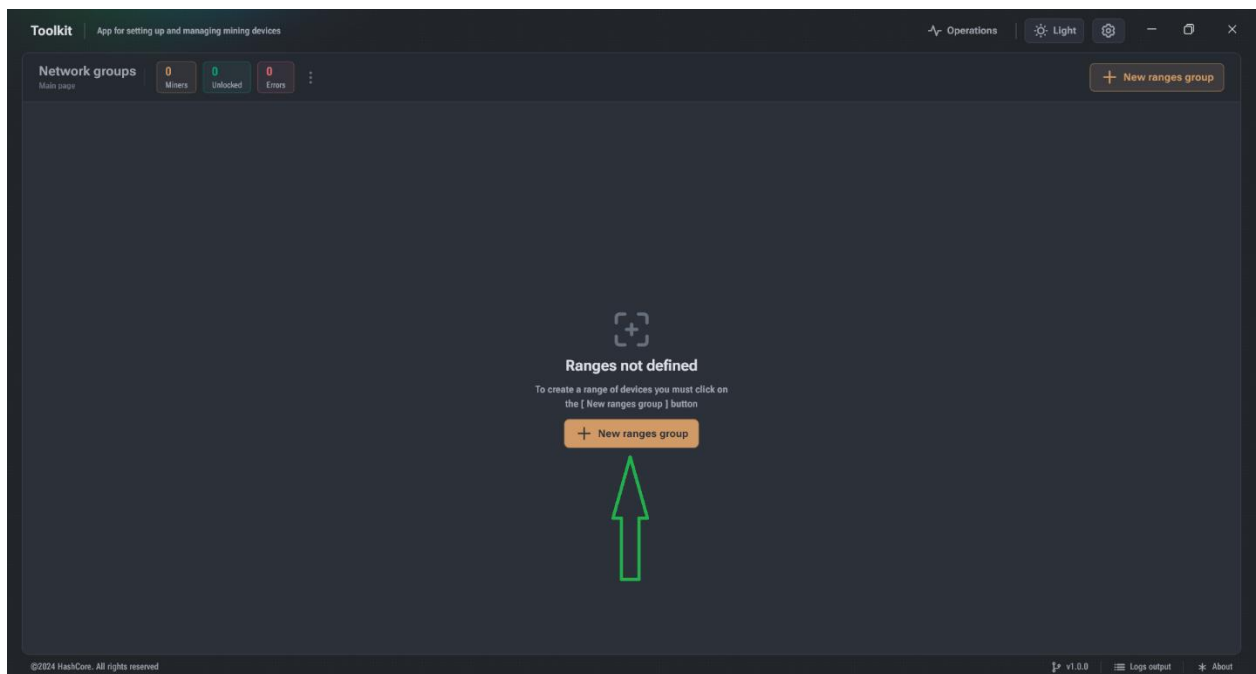


You must install the latest supported versions of the Visual C++  
Redistributable component

<https://www.techpowerup.com/download/visual-c-redistributable-runtime-package-all-in-one/>

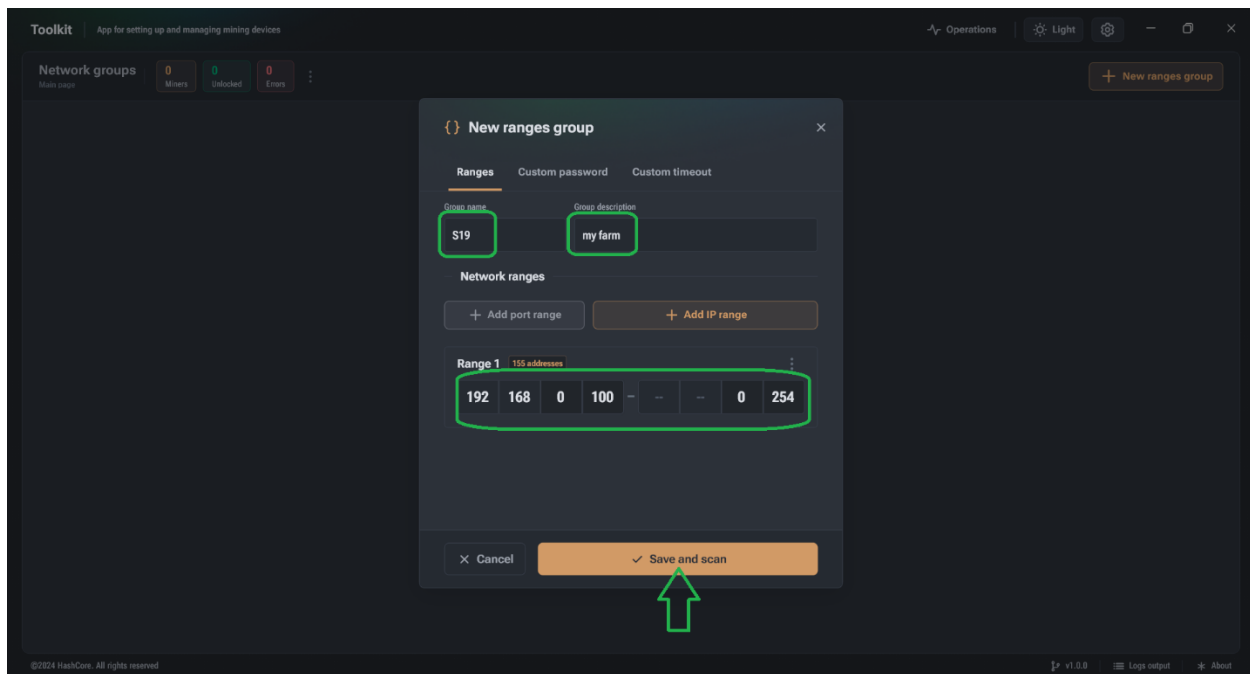
# How to Install vnish.ru Firmware by Vnish Toolkit

1. Open the Toolkit software .
2. Click on “ New ranges group ” button :

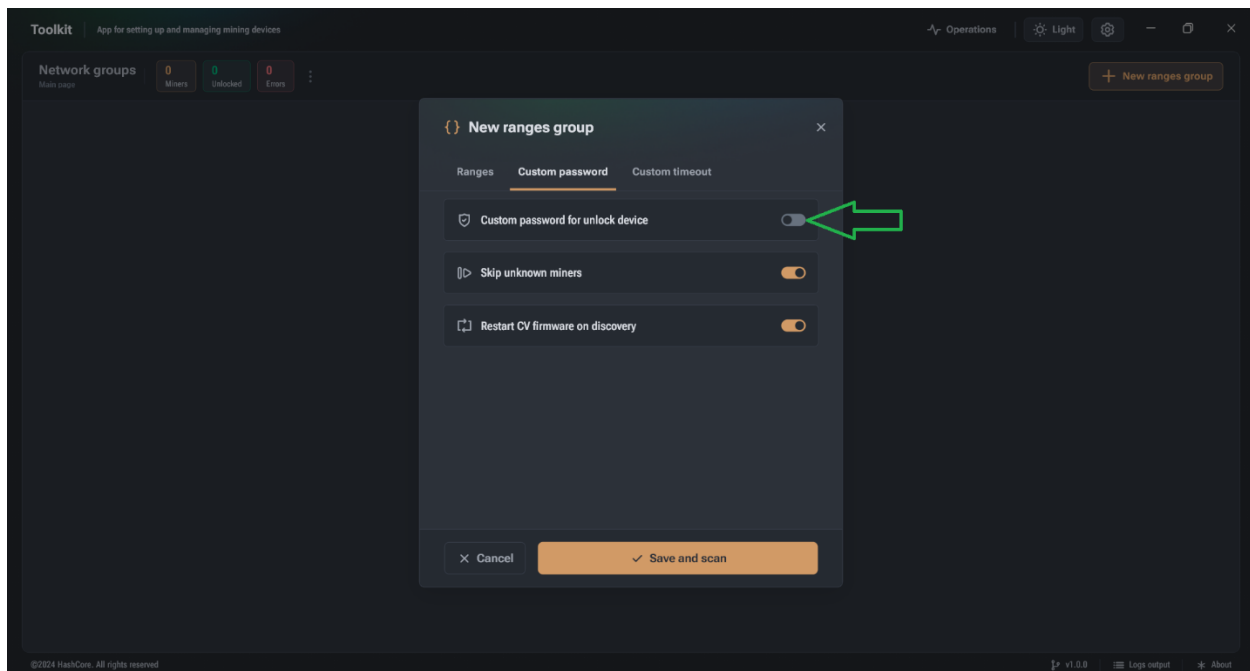


3. Now need to make a group for the IP range
  - Choose a name on “ Group Name ” box
  - Put your own description on “ Group description ” box
  - Choose your IP range on range box

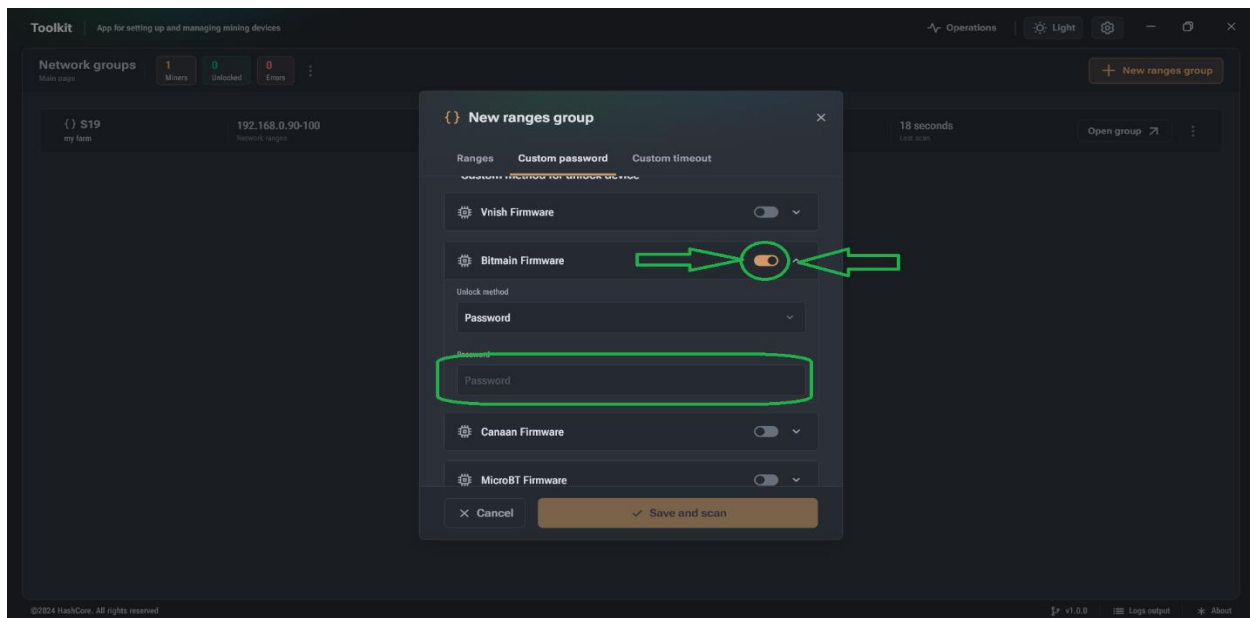
## Vnish.ru Toolkit Tutorial – Install Vnish Firmware



- Additional description :
  - If you changed the default password ( root ) , click on “ Custom password ” tab and then enable “ Custom password for unlock device ”

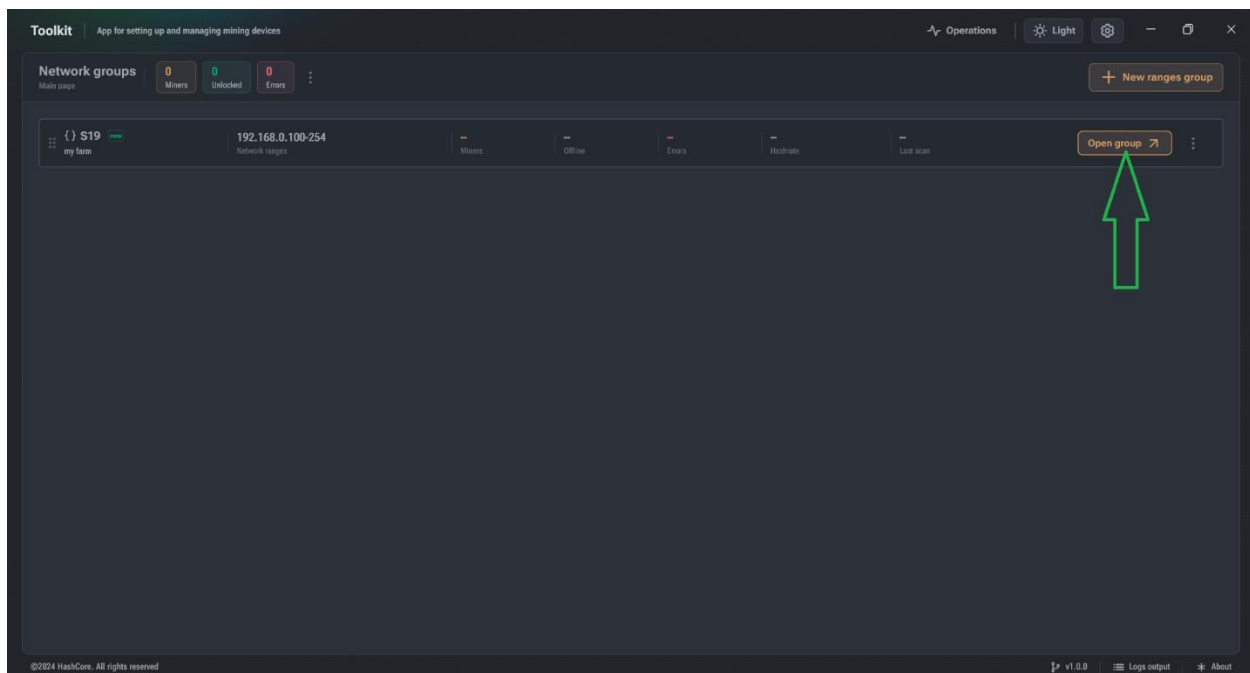


And then scroll down and enable “ Bitmain Firmware ” and click on drop down menu to see the Password . On Password box you can put your miner’s password

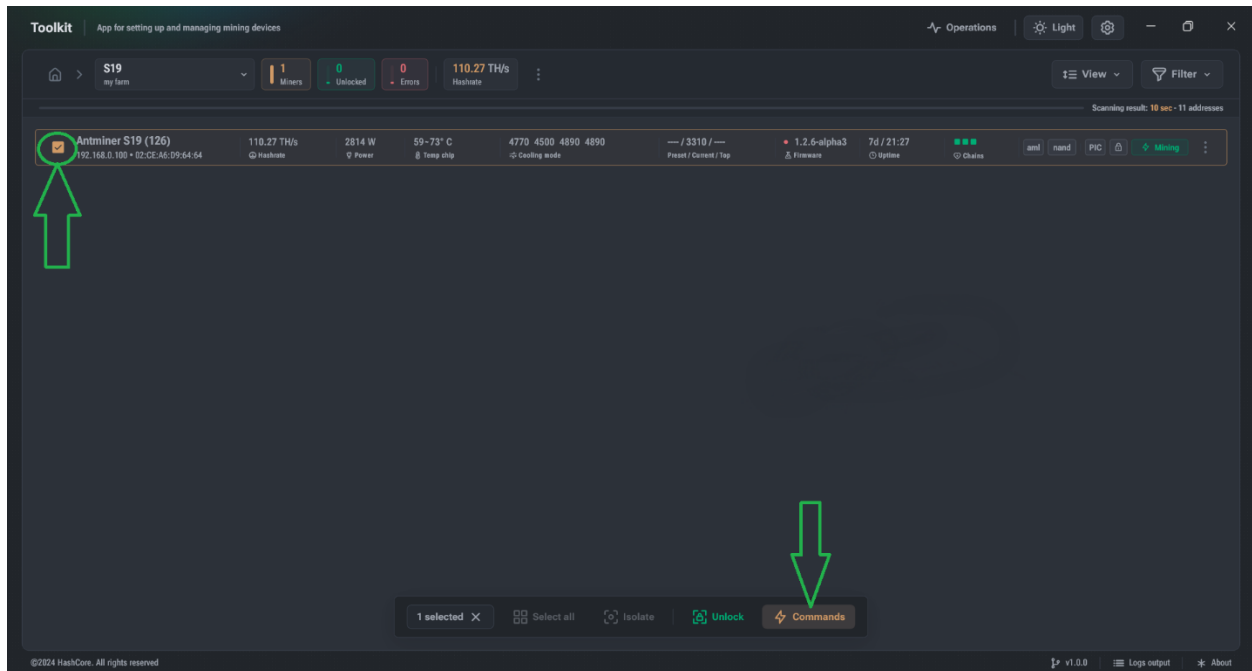


4. Now Click “ Save and Scan ”

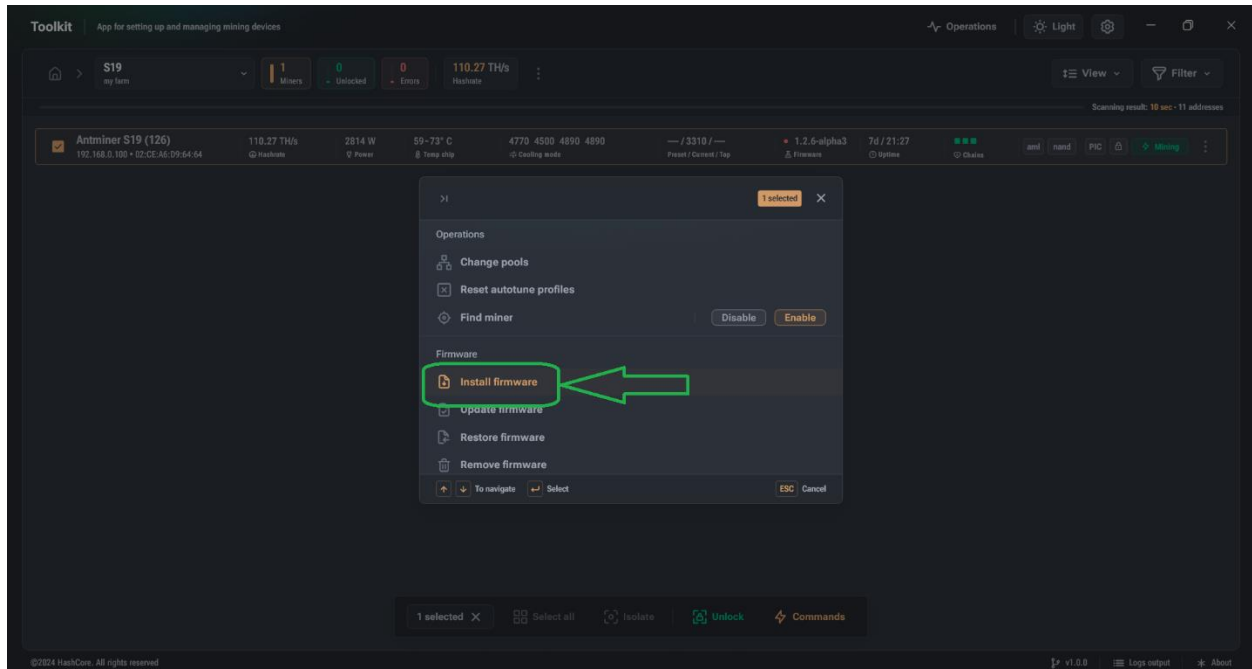
5. Click on “ Open Group ”to see the miners on IP range .



6. Now select the miner you want to install Vnish firmware on it and click on “Commands” button :



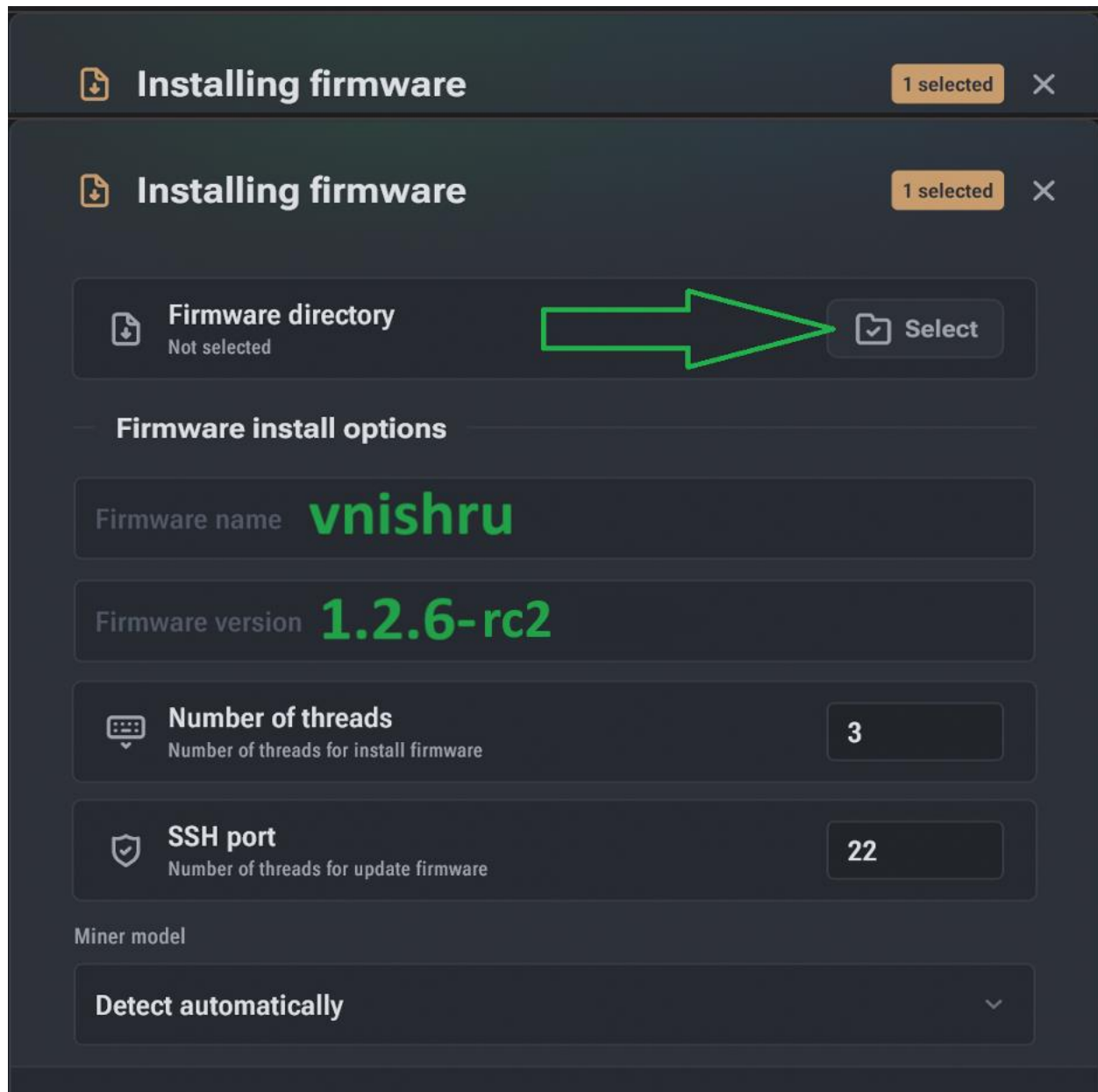
7. On Commands page click on “Install Firmware” button :



8. Then the Install page appears : Click on “ Select ” button to select the the folder where the firmware files will be located (It is necessary to download the nand install firmware files for your model in advance and place them in a folder, the firmware files will not be visible when selecting folders, this is normal) fill the boxes with information like picture below :


Firmware name : vnishru

Firmware Version : 1.2.6-rc2



**Installing firmware** 1 selected X

**Installing firmware** 1 selected X

**Firmware directory** Not selected  **Select**

**Firmware install options**

**Firmware name** **vnishru**

**Firmware version** **1.2.6-rc2**

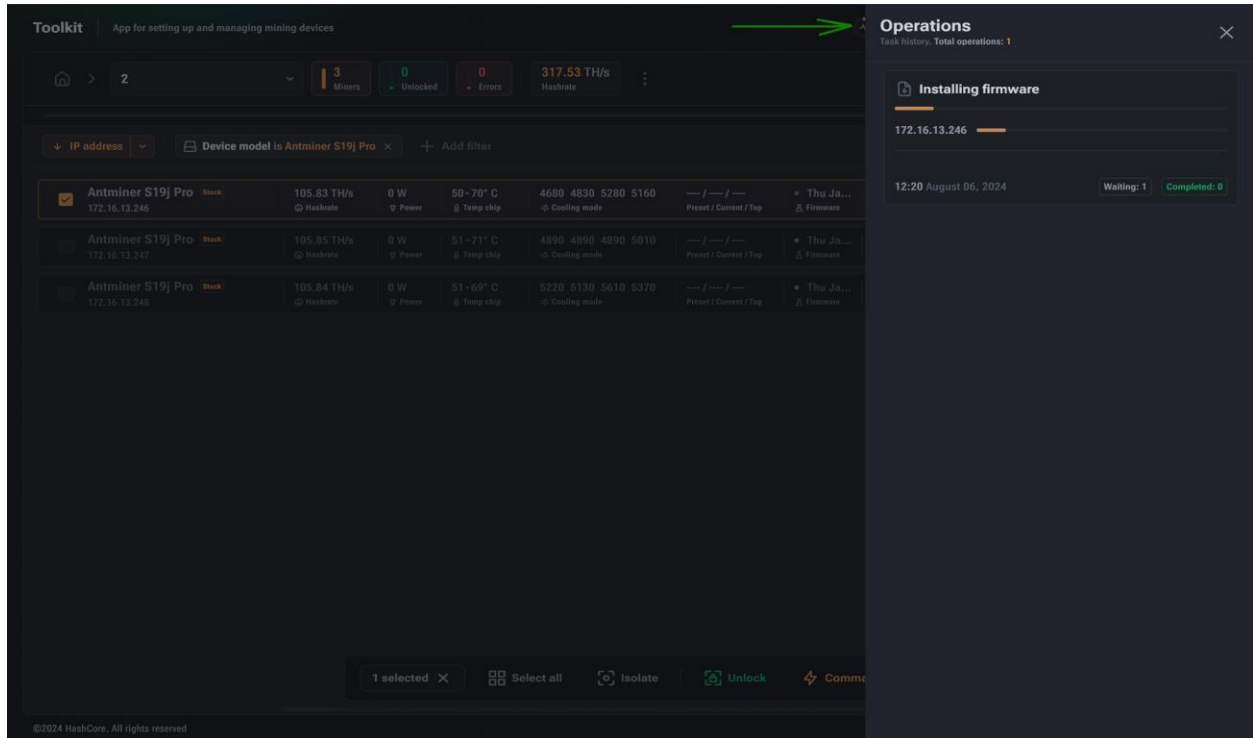
**Number of threads** 3  
Number of threads for install firmware

**SSH port** 22  
Number of threads for update firmware

**Miner model**

**Detect automatically** v

9. In the "operations" section, you can view the result of the installation process, if any error was made, then the error decryption will be indicated



The screenshot displays the Vnish.ru Toolkit interface. The main panel shows a list of mining devices, specifically Antminer S19j Pro units. The table includes columns for IP address, device model, hash rate, power, temperature, and cooling mode. The 'Operations' sidebar on the right shows a progress bar for 'Installing firmware' and a status indicator 'Completed: 8'.

IP address	Device model	Hash rate	Power	Temp chip	Cooling mode	Presets	Control	Log	Firmware
172.16.13.246	Antminer S19j Pro	105.83 TH/s	0 W	50-70° C	4680 4830 5280 5160	---	f	---	* The Ja...
172.16.13.247	Antminer S19j Pro	105.85 TH/s	0 W	51-71° C	4890 4890 4890 5010	---	f	---	* The Ja...
172.16.13.248	Antminer S19j Pro	105.84 TH/s	0 W	51-69° C	5220 5130 5610 5370	---	f	---	* The Ja...